



Improving lives together

Norfolk and Waveney Integrated Care System



Find out more and have your say

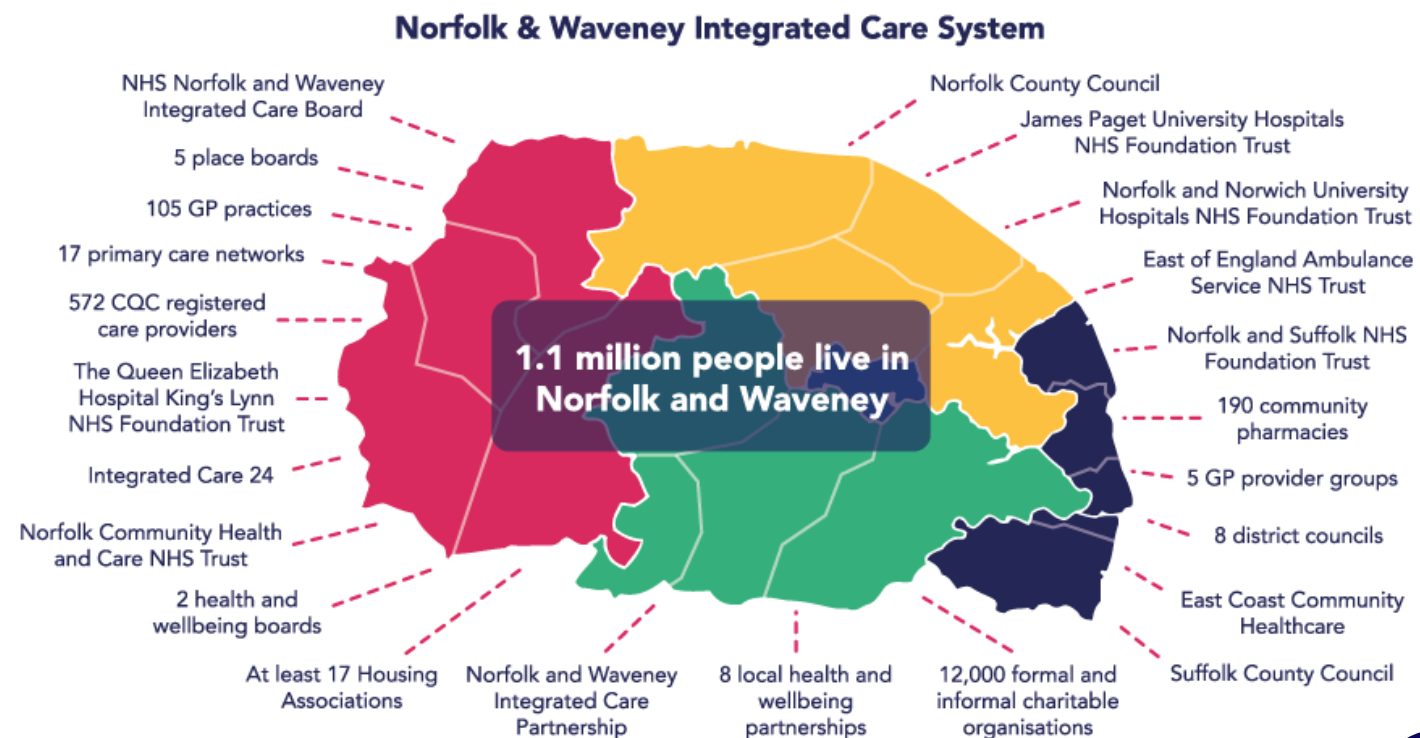
About Us

Everyone in Norfolk and Waveney deserves to live well. That's why our NHS organisations, councils, public services and voluntary and community partners are working together as an integrated health and care system to help people lead longer, healthier and happier lives.

We are joining up to tackle all the things that affect our health and wellbeing, listen to the priorities of our communities, local people and patients and tackle some of the biggest challenges we are all facing.

Integrated care is about removing traditional divisions between services so people and communities get the support and care that they need.

The Norfolk and Waveney Integrated Care System (ICS) is a new and exciting way of working, creating a genuine partnership that will make a positive difference to local people and help join up health and social care.



What are the benefits of the ICS?

Working together as an ICS will help health and care organisations tackle complex challenges, including:

- improving the health of children and young people
- supporting people to stay well and independent
- acting sooner to help those with preventable conditions
- supporting those with long-term conditions or mental health issues
- caring for those with multiple needs as our population grows older
- getting the best from collective resources so people get care as quickly as possible
- tackling waiting lists for surgery and care following the COVID-19 pandemic



Our Goals

1. To make sure that people can live as healthy a life as possible.

This means preventing avoidable illness and tackling the root causes of poor health. The health and wellbeing of people in some parts of the region is significantly poorer – how healthy you are should not depend on where you live.

2. To make sure that you only have to tell your story once.

Too often people have to explain to different health and care professionals what has happened in their lives, why they need help, the health conditions they have and which medication they are on. Services have to work better together.

3. To make Norfolk and Waveney the best place to work in health and care.

Having the best staff, and supporting them to work well together, will improve the working lives of our staff, and mean people get high quality, personalised and compassionate care.

Changes to how health and care is organised

From July 2022, as a result of the new Health and Care Act, the Norfolk and Waveney ICS will have legal status and will include a statutory Integrated Care Partnership (ICP) and a new Integrated Care Board (ICB) called NHS Norfolk and Waveney, which will replace the area's clinical commissioning group (CCG).

The Norfolk and Waveney ICP will bring together the NHS, local government, the voluntary, community and social enterprise (VCSE) sector and other partners to focus on prevention, wider social and economic factors affecting people's health and reducing health inequalities.

NHS Norfolk and Waveney will be accountable for the performance and finances of the NHS across Norfolk and Waveney - a total budget of £2 billion a year. It will have a very different role to the existing CCG – helping to bring organisations together, working together, removing traditional barriers and more.

The ICS will be made up of these two key bodies and will work with partners in local government, the voluntary sector and others and help the NHS to support broader social and economic development and tackle inequalities in health outcomes.



How we are working better together

Health and care services in Norfolk and Waveney have been working together closely over the past few years to improve services and provide more joined up care for local people.

In Norfolk and Waveney we have already achieved a lot by working together. For instance, by working more closely we've been able to make improvements to the NHS 111 service so that local people can get immediate health advice or an urgent appointment with a GP or at A&E. By bringing together GPs, voluntary groups and local government, we've helped people get benefits advice, housing help or support from local community groups. And during the COVID-19 pandemic, everyone pulled together to get more people vaccinated than almost anywhere else in the country.

The move to integrated care gives us the opportunity to really make a difference for our people and communities. Working together in partnership we can deliver huge benefits to the health and care system and will improve the health and wellbeing of Norfolk and Waveney's people and communities.



The NHS

Local Authority

Voluntary,
Community and
Social Enterprise
Sector (VCSE)

Our People and
Communities

Get Involved

With the development of the ICS, we want to make sure anyone and everyone can easily find out how to influence the way in which health and care is provided and can get the advice or support they need to improve health and wellbeing. People and communities are a vital part of the Norfolk and Waveney ICS.

The new ICS website has an online participation hub where you can share your views, experiences and ideas. Your input will help inform and influence the decisions local health and care organisations make. Why not become part of our online involvement community and tell us what matters to you at www.improvinglivesnw.org.uk.

To get started, you can support the development of our priorities and participate in an online survey or join an online discussion group.

We would particularly like to know:

- **How would you like to be involved?**
- **Are there areas or issues you would like us to consider as we develop a new strategy?**
- **What are the top three things you think we could do to improve health and wellbeing in our region?**

You can also email your views to us at: nwicb.communications@nhs.net

Or write to:

NHS Norfolk and Waveney,
Floor 8, County Hall,
Martineau Lane,
Norwich,
NR1 2DH

