



Improving lives **together**

Norfolk and Waveney Integrated Care System

Our Net Zero

Green Plan

2022-2025

The Norfolk and Waveney Integrated
Care System





Contents

Foreword from Tracey Bleakley

Introduction

Understanding our Carbon Footprint

Our Vision

Our ICS Green Plan

Progress & Achievements

Our Priority Actions

Our Focus Areas

Monitoring Our Progress

Communications & Engagement

Get in Touch

Foreword

Climate change poses an existential threat to the whole planet and we, in Norfolk and Waveney, are not immune from its wide reaching and devastating consequences.

Taking decisive action to reduce our contribution to global climate change will save lives and benefit the health services of tomorrow. That is why I am proud that nationally the NHS has made ambitious commitments to be net zero by 2045.

In Norfolk and Waveney, we must play our part in meeting this critically important commitment. The organisations responsible for your health and care have made significant steps towards more sustainable ways of operating over recent years.

But we must go further and faster.

This plan for the Norfolk and Waveney Integrated Care System sets out how we will work together towards this goal - sharing best practice, collaborating, and holding each other to account.

Finally, I want to set out how much we would value your support on our journey to Net Zero and, over the coming months, we will be setting out more information on how you can get involved.



Tracey Bleakley
Chief Executive Officer
Norfolk and Waveney Integrated Care Board



Climate change is a health emergency as well as an environmental emergency

Amanda Pritchard - NHS Chief Executive

The National Greener NHS Vision is to become the world's first net zero carbon health service and respond to climate change, improving health now and for future generations.

As a key priority, the NHS will work to reduce air pollution and improve local environments.

A greener NHS is about reducing the emissions we are emitting but also ensuring we are working with partners to make our environment a more welcoming and safer place to live and work for all. We must move away from a linear economy to a circular economy where we are all more aware of carbon in the system. And when we buy and consume, we understand how it got here and what happens when we have finished using it.

As an anchor institution, the NHS greatly influences the health and wellbeing of its communities and can make a meaningful impact on the economic, social, and environmental wellbeing of the population. By choosing to invest in and work with others locally and responsibly, the NHS can have an even greater impact on the wider factors that make us healthy.

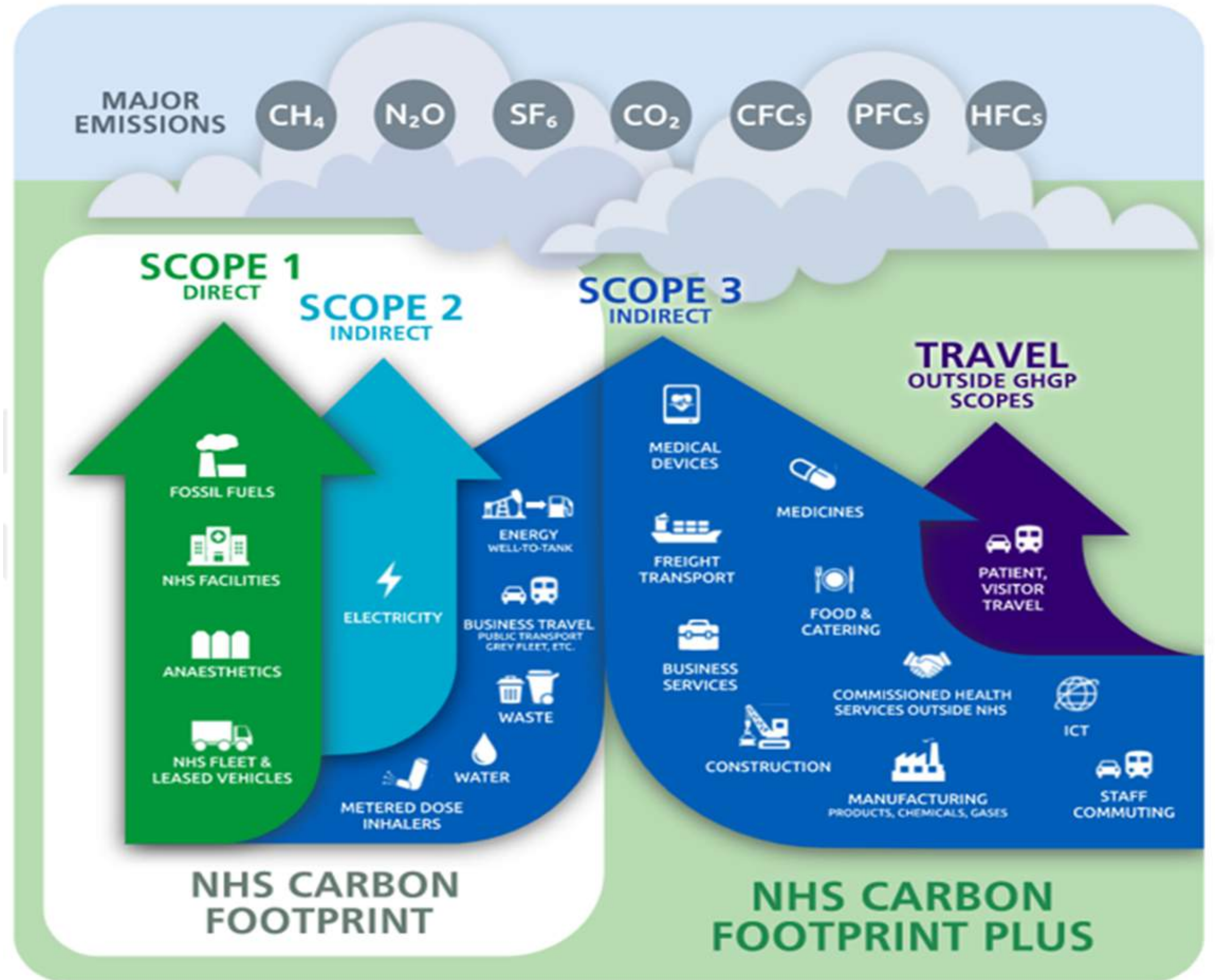
Locally, as an anchor institution, your health services will use their impact and influence to positively contribute to health, wellbeing and improving environmental safety across Norfolk and Waveney.

[Click here to read our ICS Green Plan](#)

Understanding our carbon footprint

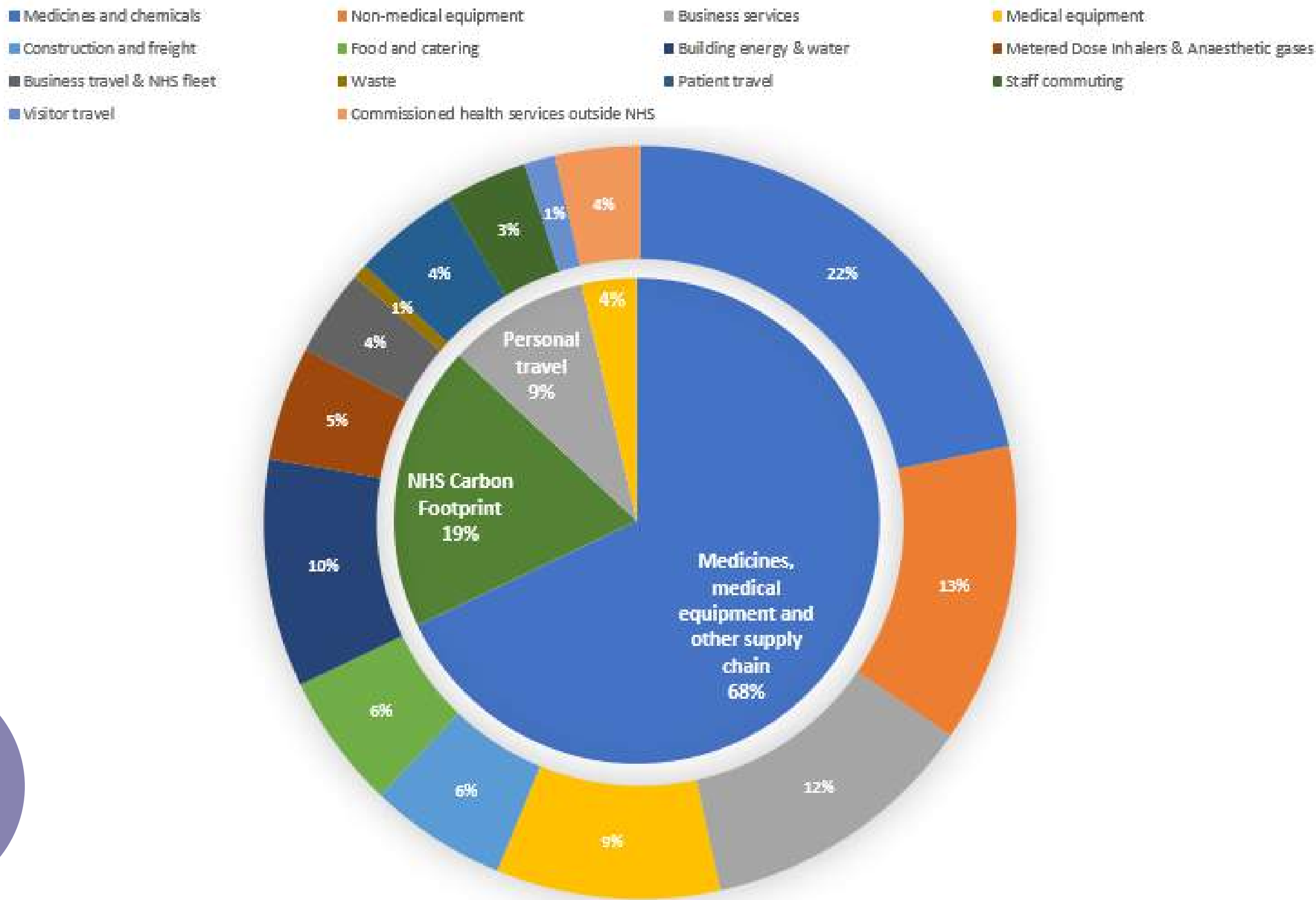
NHS England and NHS Improvement have set out a comprehensive methodology for defining the NHS Carbon Footprint.

This captures both the emissions the NHS has control over (the 'NHS Carbon Footprint') as well as emissions that the NHS has influence over (the 'NHS Carbon Footprint Plus').



[Click here to read our ICS Green Plan](#)

Our ICS Carbon Footprint



Using the NHS England and NHS Improvement methodology, this graph shows the position and performance of our ICS from 2019/20.

That is the baseline year that our trajectories to achieving Net Zero are set from.

[Click here to read our ICS Green Plan](#)



Our Vision

Over the immediate 3-year plan period we will have established ourselves as an enabler of collaboration and sharing of best practice across our member organisations.

All parts of the ICS will have decarbonisation fully embedded into their day-to-day operations, empowering a system wide transition to Net Zero.

Our ICS Green Plan

The Role of the ICS

The role of the ICS is seen as one of facilitation, empowerment, and engagement.

The ICS should focus on driving consistency and ensuring best practice is shared and adopted, and its governance should reflect this role.

Member trusts and organisations are still responsible for delivering their own plans, though they should look to learn from each other.

[Click here to read our ICS Green Plan](#)



Our ICS Green Plan

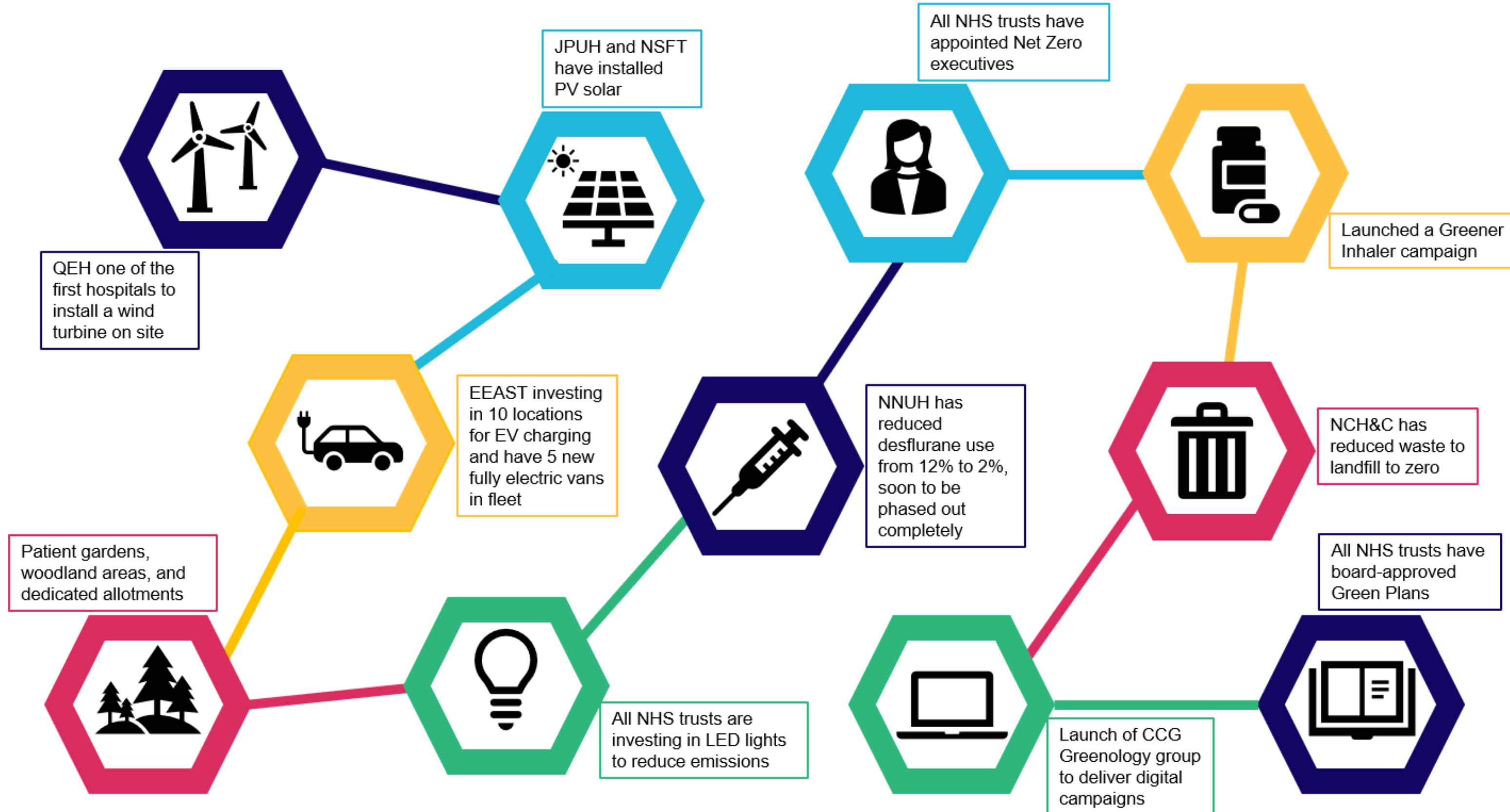
Our plan provides the ICS with a co-ordinated and strategic approach to the Net Zero programme and set out how we will embed, respond to, and help deliver the ambition of becoming the world's first 'Net Zero' national health service.

Our plan sits alongside and complements individual ICS organisations' plans. It focuses on enabling partner organisations to deliver their aims without duplication.

The plan identifies key areas to focus on over the next 3 years, and initiates action around what we will do, and are already doing, to respond to the environment and climate emergency.

Through this plan we will achieve Net Zero together.

Progress and Achievements

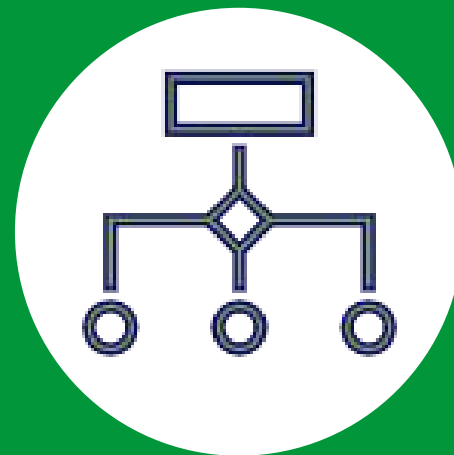


Our Priority Actions

Within ICS organisations there are different levels of progress towards Net Zero.

Whilst all ICS organisations have a Green Plan / Net Zero strategy in place and governance in place to enable delivery of Green Plan objectives, there are different levels of financial and skills resources available within organisations to deliver their Net Zero targets.

The ICS will lead, enable and empower system-wide Green Plan progress by implementing priority actions across four key areas to support the delivery of Green Plan objectives throughout the ICS partner organisations:



Establishing robust governance and a PMO to assure/support delivery



Develop internal resource and expertise to support the system

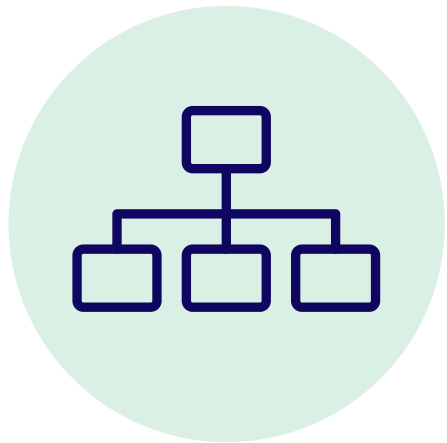


Further develop partnerships to harness investment and skilled resources



Adopt identified best practice from across the ICS

Focus Areas within the Green Plan



Workforce and System Leadership



Sustainable Models of Care



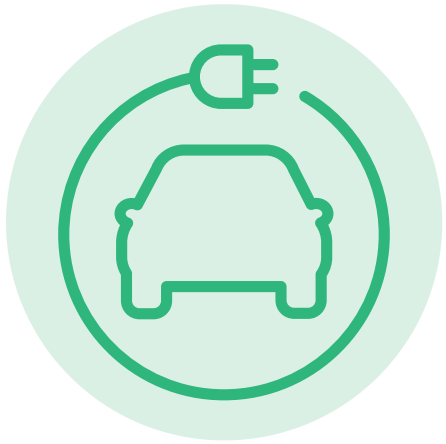
Estates and Facilities



Adaptation



Digital Transformation



Travel and Transport



Medicines



Nature Connection and Biodiversity



Food and Nutrition



Supply Chain and Procurement



Primary Care

Click the link below to find out more, including:

- why the focus area is important for us;
- what we will achieve over the 3-year plan;
- how we will achieve it; and
- how we will measure our success.



[Click here to read
our ICS Green Plan](#)

Monitoring our Progress

The ICS Green Plan is delivered by the ICS Green Plan Delivery Group. Monitoring of progress against the system action plan and objectives will be co-ordinated by the ICS Estates team.

Our progress against the Green Plan will be reviewed through periodic progress reports to the Delivery Group and updates fed up to ICS Programme Board meetings and Exec Management Teams. Progress will be reported formally to the Board on an annual basis.

Progress towards the NHS's Net Zero carbon emission targets are reported twice a year to the NHS public boards. The NHS England & Improvement team will hold ICSs to account on delivery of their Green Plans, therefore ICSs will be tasked with holding organisations within their system to account.

Our Green Plan is a live document.
If we identify ways to increase our green ambitions, we will.

Strong Communication is Key

Support from our partners, staff, patients, and visitors is critical to the successful delivery of this Green Plan and our longer-term Net Zero goals.

We want to inspire people to find out more about how they can support this work, and go on to join our community 'Green Teams' nationally and locally.

We want to encourage and enable people to take action to reduce health and care emissions, and promoting nature connection and biodiversity.

Our communications and engagement objectives:

Raise Awareness

Amongst the NHS workforce in Norfolk and Waveney, partners, stakeholders and the wider public of the links between health and climate change, the NHS Net Zero ambition, and the crucial role it plays in securing the improvement of health and care services now and for future generations.

Build Understanding

Among the NHS workforce in Norfolk and Waveney, partners, stakeholders and the wider public of how greener measures are improving patient care today and improving efficiency, as well as reducing carbon emissions – and therefore improving health and care now and in the future.

Get In Touch With Us

Email Address

Nwicb.icsnetzero@nhs.net

Website with Contact form

<https://improvinglivesnw.org.uk/our-work/healthier-communities/the-ics-green-plan/>

