



Improving lives **together**

Norfolk and Waveney Integrated Care System



**Norfolk and Waveney**

# Short term plan for stabilising Dental Services in Norfolk and Waveney

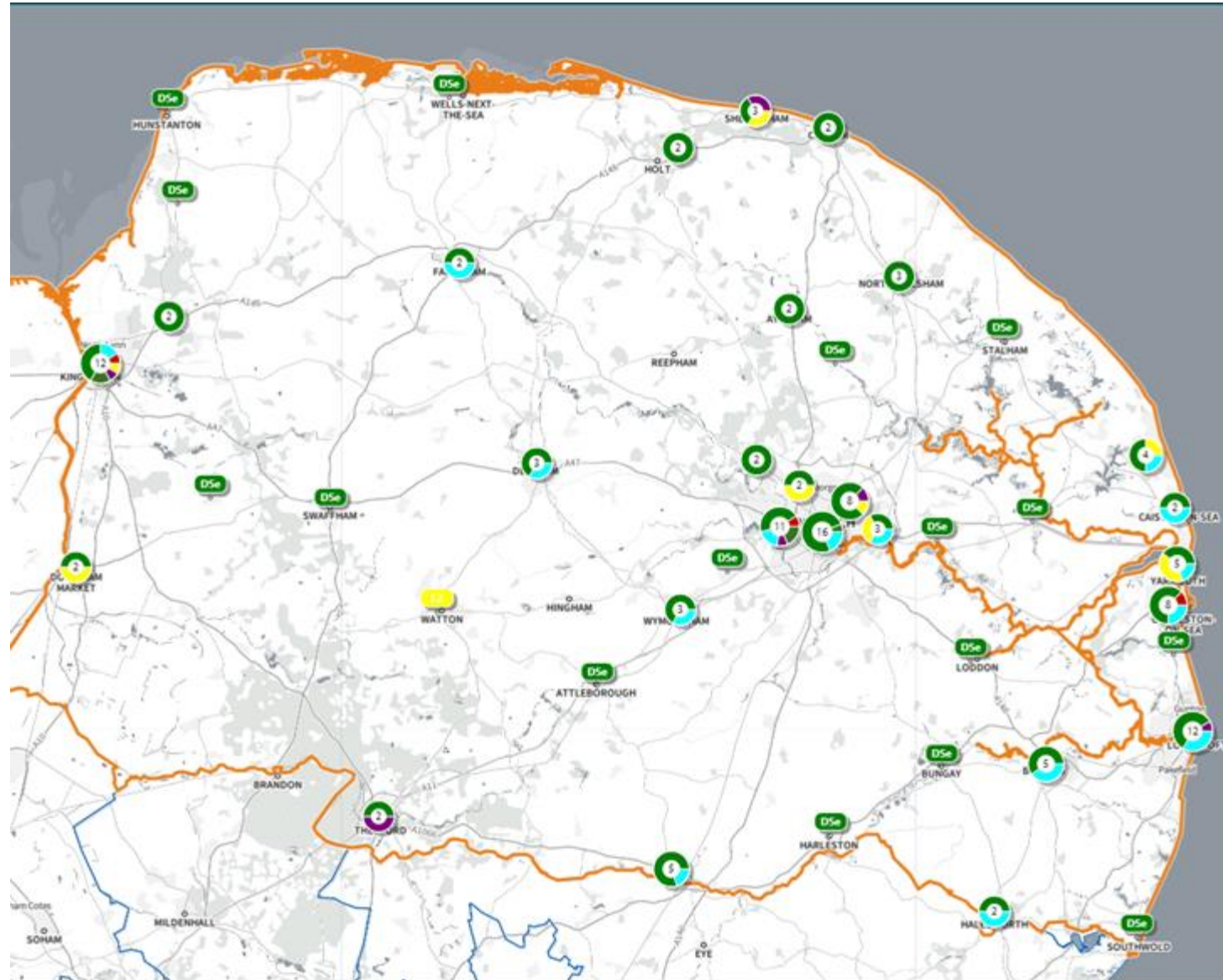
September 2023

# Context

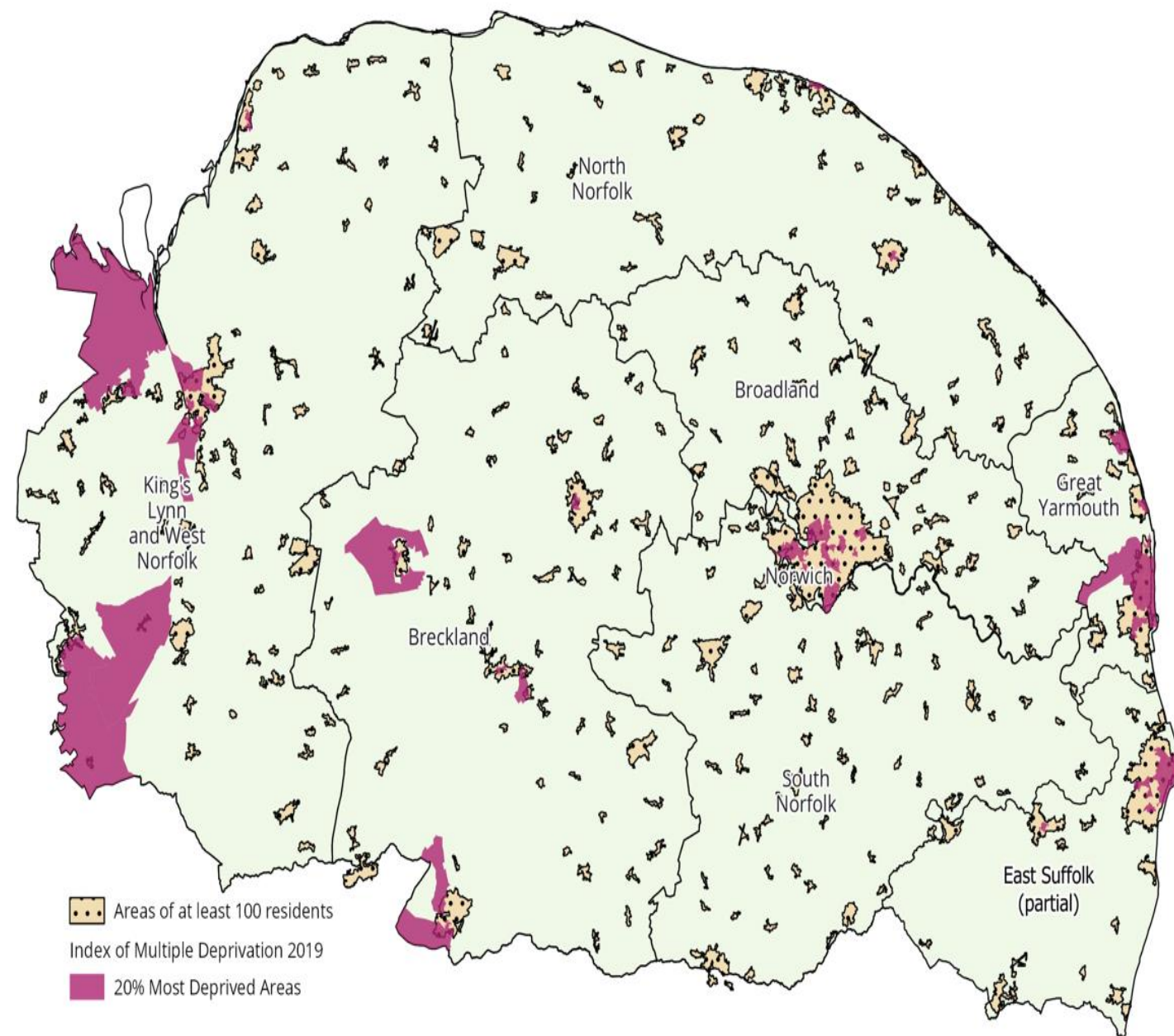
ICBs took on responsibility for commissioning pharmaceutical services, optometry and primary, community and secondary care dental services on 1 April 2023

Services in Norfolk and Waveney

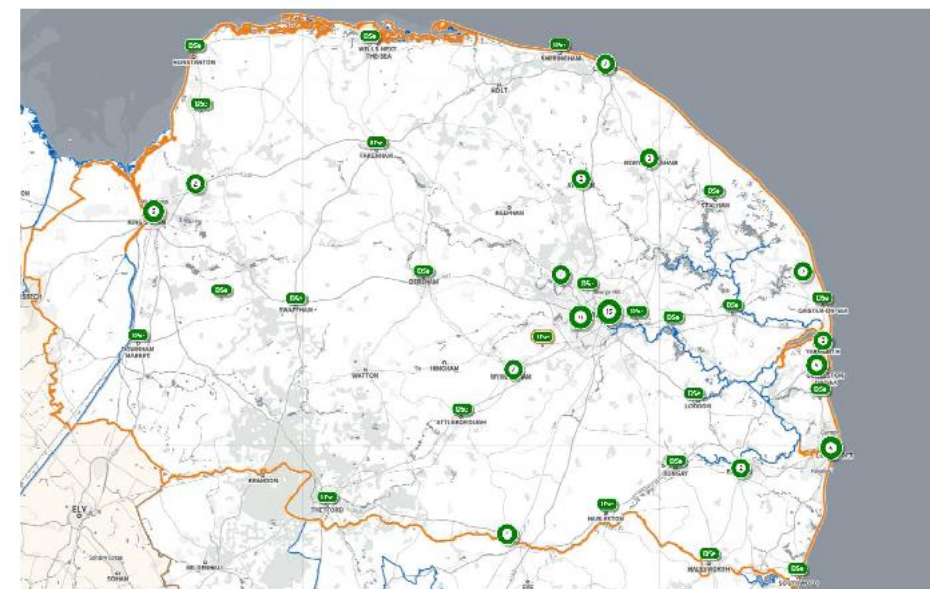
- **102 primary care contracts**
- **Community dental services / Special Care**
- **3 secondary care contracts at place**
- **Level 2 oral surgery specialised services in primary care**
- **Urgent treatment pilot practices**
- Access to Level 2 specialist endodontic and restorative services in East of England
- Trauma pathway pilot across East of England
- Building relationships with individual providers - a mix of large corporates, small independents and large & small partnerships
- Workforce data – 410 dentists (2021) working in the NHS



## N&W ICS- areas of population density by LSOAs and 20% most deprived LSOAs within each LTLA



NHS Dental Services Providers in Norfolk & Waveney – May 2023



# Key considerations

## Norfolk and Waveney Oral Health Needs Assessment (May 2023)

- East of England had the second lowest prevalence of dental decay at 19%.
- Norfolk and Waveney had the highest prevalence of experience of dental decay in 5-year-olds in the EoE in 2022 at **23.8%**
- Within Norfolk and Waveney, Great Yarmouth and West Norfolk/King's Lynn had the highest prevalence of experience of dental decay in 5-year-olds in 2022.
- Increasing number of 15 – 19 year olds with decay being referred to secondary care for extractions
- These results highlight areas of higher dental needs and aim to help NHS Norfolk and Waveney Integrated Care Board understand commissioning priorities across the ICS.

## NHS Workforce Long Term Plan (June 2023)

- The NHS Long Term Workforce Plan, published June 2023, proposes plans to train thousands more dentists in England over the next five to ten years
- As part of the plan, it will increase training places for dental therapists and hygiene professionals to more than 500 by 2031/32.
- It will also increase training places for dentists by 40% to more than 1,100 by this same year.
- In support of this, it will increase training places for dental therapy and hygiene professionals by 28% by 2028/29, with an increase of 24% for dentists to 1,000 places over the same period.

# Norfolk and Waveney ICB - Joint Forward Plan

## Driving integration

- Collaborating in the delivery of people-centred care to make sure services are joined-up, consistent and make sense to those who use them

## Prioritising prevention

- A shared commitment to supporting people to be healthy, independent, and resilient throughout life. Offering our help early to prevent and reduce demand for specialist services

## Addressing Inequalities

- Providing support for those who are most vulnerable using resources and assets to address wider factors that impact on health and wellbeing

## Enabling resilient communities

- Supporting people to remain independent whenever possible, through promotion of self-care, early prevention, and digital technology where appropriate

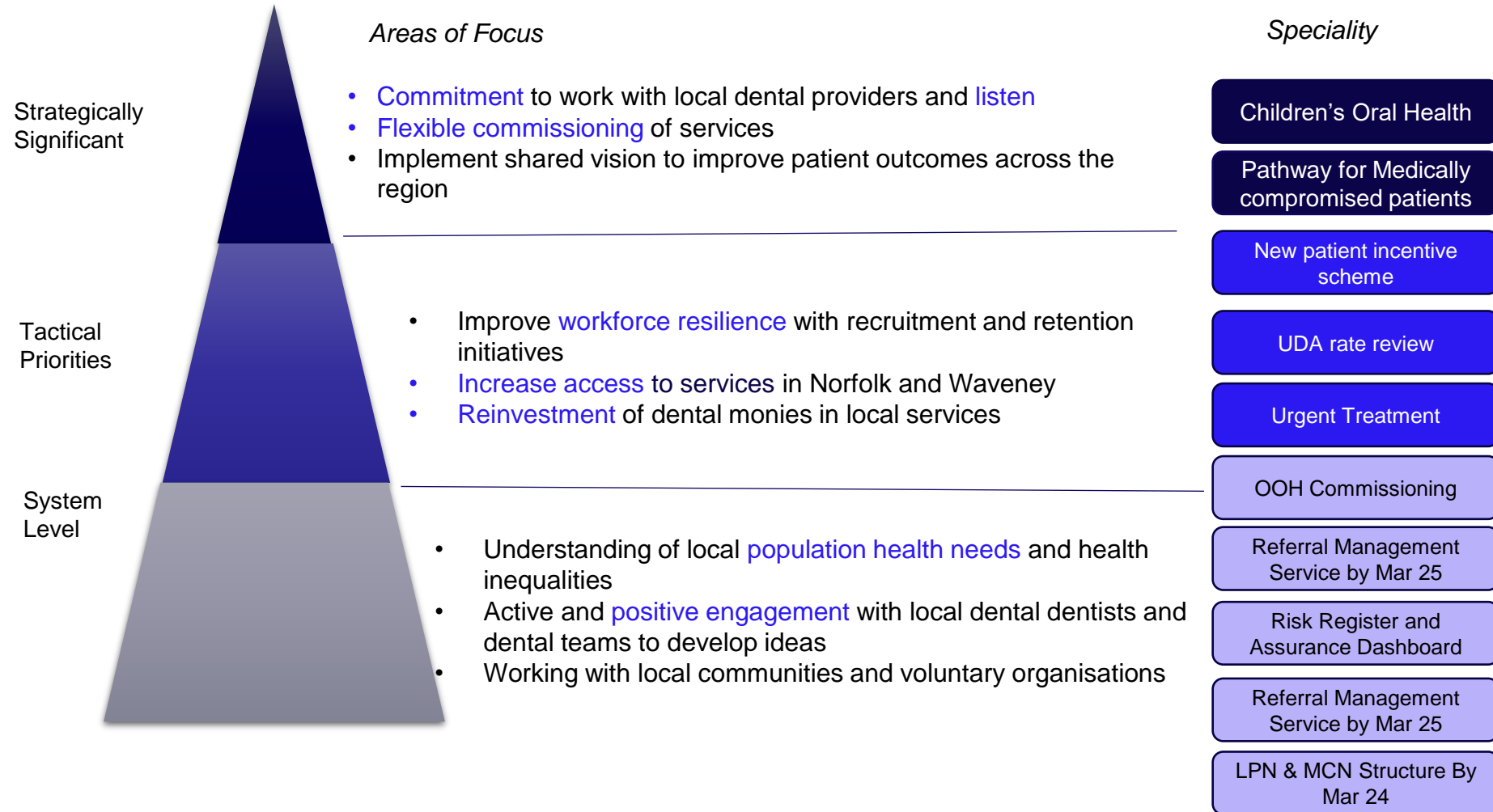
## ICS Ambitions to 2025

- Urgent and Emergency care
- Primary Care
- Elective Recovery
- Improving Access to mental health services
- Improving our financial position
- Population Health Management, Reducing Inequalities and Supporting Prevention
- Improving services for Babies, Children and Young People
- Transforming care in later life

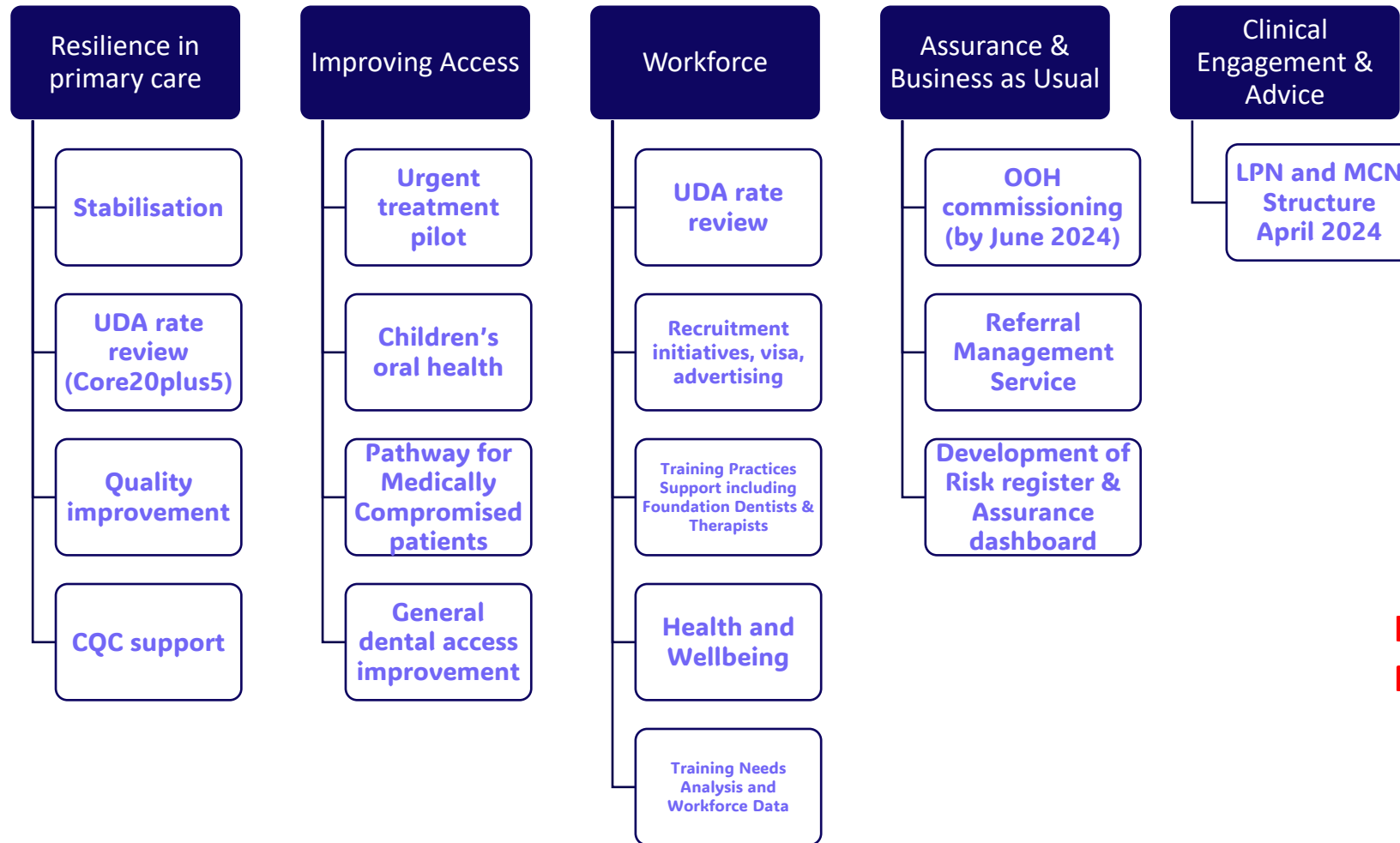
# How do things feel right now – drivers for change?

- **Lack of access** to general dental services for new patients
- Increasing pressure from patients to **access** NHS dental services but no dentists
- Increasing pressure on the dental **workforce**, including reception teams
- **Limitations of national** dental contract for primary care services
- Workforce **recruitment and retention** challenges
- Inability to attract dentists and dental care professionals to Norfolk and Waveney
- **Funding limitations** and reduced patient charge revenue
- Developing local provider relationships with the ICB (**building trust**)
- **Low morale** reported by some in the dental profession due to the pressures (recent ICB health and wellbeing survey)
- Contract terminations and move towards private dentistry
- Oral health needs of the **public and patients**
- Poor oral health outcomes for **children and young people**
- Limited access to urgent treatment for **individuals in pain**
- **Access to Level 2 services** for oral surgery, endodontics and restorative services at **local level**
- **Waiting lists** for access to some services, e.g. community dental services and secondary care – limited capacity

# What can local commissioning offer?



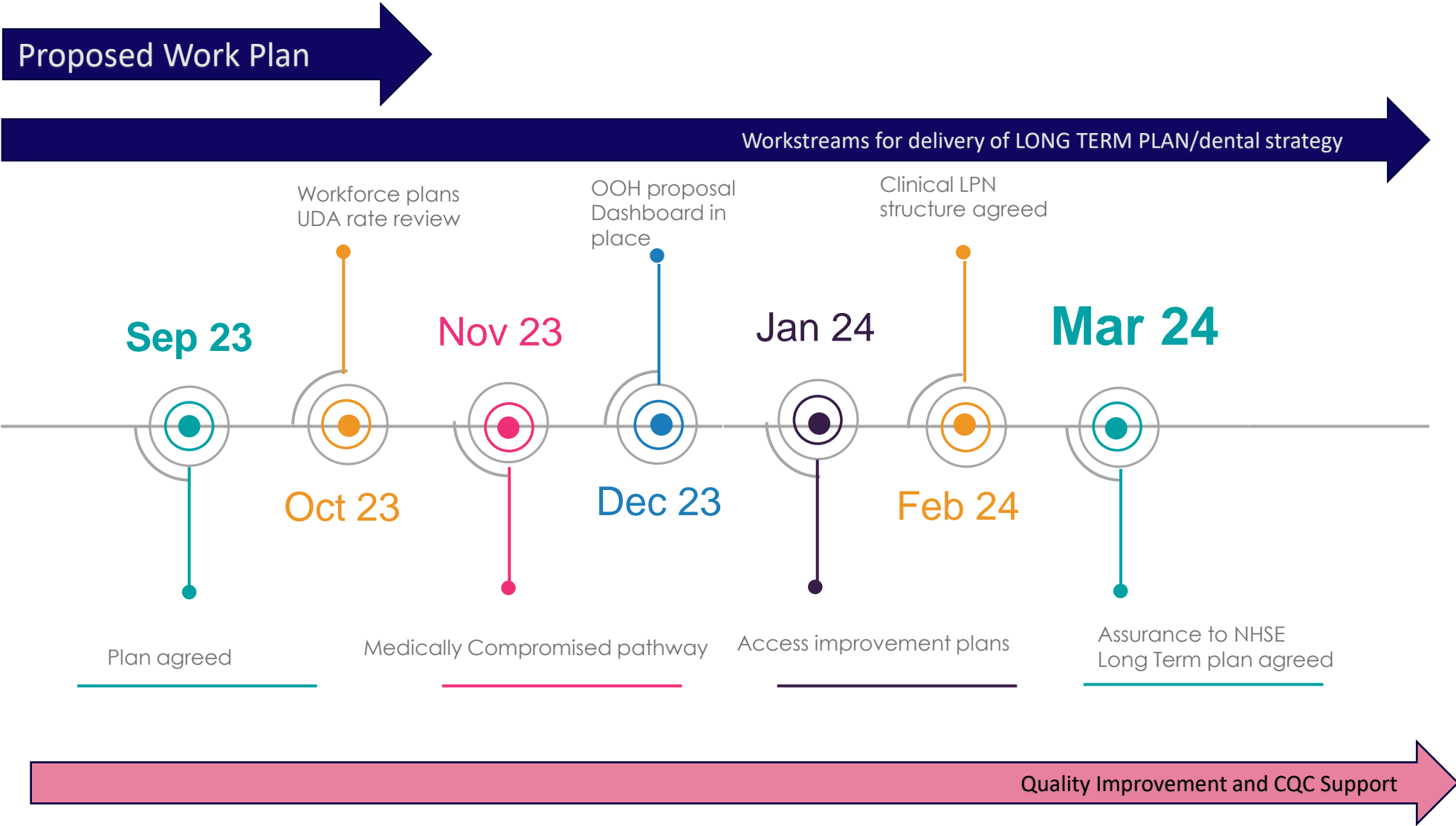
# Short term opportunities 2023/2024



**ICB Dental 5 Year Plan by March 2024**

Continuing active engagement with dental profession

# Short Term Plan Timeline



# Our Commissioning intentions to April 2026 and beyond

- To stabilise NHS dental services in Norfolk and Waveney and improve resilience
- Active engagement with the dental profession
- Improve access for to NHS dental services for our local population through integrated working with our system partners and key stakeholders using evidence based upon our Oral Health Needs Assessment
- Commitment to reinvest dental monies in NHS dental services in Norfolk and Waveney and to optimise flexible commissioning opportunities
- Workforce recruitment and retention – make Norfolk and Waveney a great place to come and work
- Collaboration with East of England system partners to commission services where beneficial and more effective to commission jointly with other ICBs in the region
- Expansion of Level 2 services
- Upskilling, training and education for the whole dental team working with local higher education institutions and NHS England
- Delivering the outcomes and recommendations from the East of England Secondary Care Dental Steering Group
- Reduce waiting times for access to services and treatment
- Engagement with patients and members of the public
- Support NHS dental practices through Quality Improvement
- Health and Wellbeing of all staff working in NHS dental services

# Enablers

- Funding – ring fenced dental budget 2023/2024 and reinvestment of dental monies
- Quality Impact Assessment / Equality Impact Assessment
- Dental Contract reform Nov 2022 enabling multi-skilled dental team approach
- NHS England Dental Access Recovery Plan
- NHSE Long Term Workforce plan (June 2023)
- Use of Digital tools
- NHS England Training, Education and Workforce engagement
- Oral Health Needs Assessment update
- ICB staffing structure and clinical advisor resources

# Key stakeholders

- Members of the public and patients living in Norfolk and Waveney
- Local Dental Professional Network and Managed Clinical Networks
- Local Dental Committees
- General dental providers and performers / Orthodontic providers
- Dental care professionals
- Dental practice teams
- Level 2 specialists
- Community Dental Services / Special Care Dental Services
- Secondary Care service providers
- MPs, councillors, HOSC in Norfolk and Suffolk
- Norfolk County Council Public Health
- Suffolk County Council Public Health
- Healthwatch Norfolk / Healthwatch Suffolk
- University of Suffolk, UEA and West Anglia college
- East of England Integrated Care Boards
- NHS England