

We want people with lived experience to join our Patients and Communities Committee.



Improving lives together

Norfolk and Waveney Integrated Care System

Can you help us make sure the application process is as open and accessible as possible?



We're Recruiting Lived Experience Representatives



People have **lived experience** when they learn things as they live their lives through direct involvement with everyday events.

For example, experiences of **being ill**, **caring** for someone who is ill, **accessing care**, living with **debt** or in **poor housing** conditions or with a **disability**.



We want to make sure that the views of lots of different **local people** are at the centre of everything we do. We would like one of the lived experience representatives to focus on **children and young people**.



When we work in **partnership** with people the care and services they get are usually much better.

Patients and Communities Committee



We are looking for people with lived experience to join our **Patients and Communities Committee**.

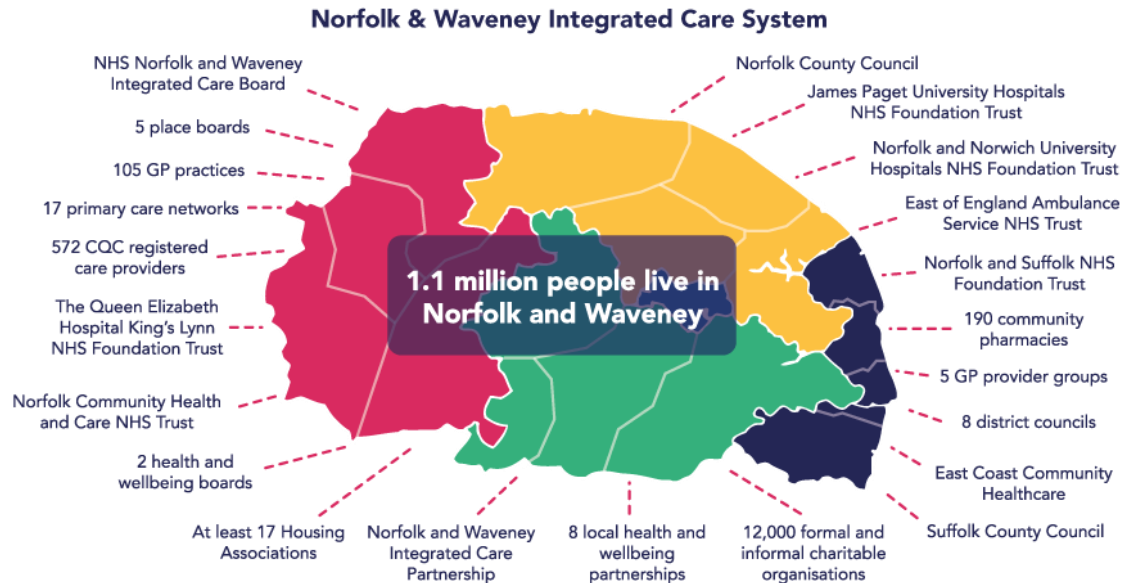


Norfolk and Waveney ICB Patients & Communities Committee - 23 January 2023

You can watch the **first meeting** on our YouTube channel:
<https://www.youtube.com/watch?v=5bnw0TYYNRw>

This committee will tell **NHS Norfolk and Waveney Integrated Care Board** that we are working with our people and communities to make care and services better

Our Integrated Care System (ICS)



NHS Norfolk and Waveney ICB **plans and buys healthcare** services for our local residents.

The ICB is part of the Norfolk and Waveney **Integrated Care System**.

Integrated care systems are about **planning health and care services** based on what people **need** in your area. You can read more on our easy read page:

<https://improvinglivesnw.org.uk/about-us/easy-read/>



What would the lived experience people on the committee do?



Go to a **2-hour meeting** every other month.



Read and understand the meeting papers.



Take part in the **discussion** during the meetings.
Listen to others to understand the lived experience of others within our local population.

How we plan to offer support



We would offer support sessions to help fully **understand** the **meeting papers**.



We will ensure that lived experience representatives **views and feedback are heard** and that they are able to **take part** fully in the meetings and discussions.



Receive **reasonable adjustments** where possible relating to meetings and the provision of information.

Payment and expenses



Lived experience representatives will be **offered involvement payments and expenses** in line with the policy currently being developed by NHS Norfolk and Waveney.



No one has to take payment. We can find other forms of **mutual benefit** e.g. skills development, formal recognition for volunteering.



We want to know...?



- What **information** should we include in the recruitment pack?



- How shall we **tell everyone** about the opportunity to reach as many people and communities as possible?



- How shall we ask people to **apply** for the opportunity to make it as **fair** and **easy** as possible?

Is there anything else we need to think about?



- When you have lots of applications you make a smaller list of people you want to interview called a **shortlist** . How should we choose who will be interviewed?



- How can we make the **interview process** easy for everyone?

Next steps...



- Please send **feedback** by **Friday March 31st** to:
 - **Email:** nwicb.haveyoursay@nhs.net
 - **Phone:** 01603 595857
- You can also use that **email** to arrange for someone to **speak to you or to a group**
- ✓ We will **use your feedback** to make a recruitment pack and process
- ✓ We will **tell everyone** about the opportunity in **early April 2023**